

Touch Screen Controller

Model Name

BMS-CT2560U-E
(BMS-CT1280TU)
(BMS-CT2560U-TR)
(BMS-CT2560U-UL)



- Thank you for purchasing this System Controller.
- In order to use this product safely and correctly, please read this operation manual carefully before use and make sure that you fully understand the contents. In particular, please be sure to read the "Safety Precautions".
- After reading this manual, be sure to keep it in a place where the operator of the Unit can always view it.

About the Owner's Manual



For the details, please refer to the Owner's Manual of this product. You can download it from the following Web page URL within this product.*

* PC must be connected to this product via LAN cable, and its first three parts of IP address must be set as "192.168.2" (e.g. 192.168.2.1). You can access with a web browser.

⇒ <http://192.168.2.80/touchscreencontroller/EN/download.html>

1 Safety Precautions

This section explains safety precautions you must follow in order to prevent harm to the user and other persons and damage to property.

"Display Description" explains the classification of the degree of harm or damage that may occur if the unit is handled incorrectly, while "Symbol Description" indicates the meanings of symbols.

Display Description	Symbol Description
WARNING Indicates "Content that is expected to result in death or serious injury (*1) to the user in the case of incorrect handling".	Indicates prohibited actions. Specifically prohibited contents are indicated with a picture and/or text in or near the symbol.
CAUTION Indicates "Content that is expected to result in minor injury (*2) to the user or damage to property (*3) in the case of incorrect handling".	Indicates instructions which must be followed. The actual contents of the instructions are indicated with a picture and/or text in or near the symbol.

* 1: Serious injury refers to lasting after effects such as blindness, injury, burns (high temperature / low temperature), electric shock, bone fracture, or poisoning, etc. and injuries that require hospitalization/long-term outpatient treatment.
* 2: Minor injury refers to injuries, burns, or electric shocks, etc. that do not require hospitalization or long-term outpatient treatment.
* 3: Damage to property refers to extended damage related to houses, household goods, livestock, or pets, etc.

WARNING

Installation Precautions

Request installation Ask the dealer from whom you purchased the unit or a professional for installation work. Installation requires specialised technical expertise. If you attempt to perform installation work yourself and perform the work incorrectly, it may cause fire, electric shock, or injury.	Use a designated TOSHIBA air conditioner. Please use a designated TOSHIBA air conditioner. Using products other than specified may cause fire, electric shock, or water leakage. Also, please ask a professional for installation work.
---	--

Usage Precautions

Do not operate the switches with wet hands. Doing so may cause electric shock or failure.	Do not wet the System Controller. Please be careful not to get the System Controller wet.
Turn off the power if anything is abnormal (burnt odour etc.). Continued use may cause fire or electric shock. Please ask the dealer from whom you purchased the product.	Do not use a power source other than the specified model. Using a power source other than the specified model may cause fire or failure. Please use 220-240 V AC.

Relocation/Repair Precautions

Do not remodel. Doing so may cause fire or electric shock.	Please ask the dealer from whom you purchased the unit for repair. Faulty repair may cause fire or electric shock.
Contact a specialist or the dealer from whom you purchased the unit to relocate and re-install the air conditioner. Faulty installation may cause fire, electric shock or injury.	

CAUTION

Installation Precautions

Do not install in areas with high humidity or vibration. Doing so may cause a failure.	Do not install in direct sunlight or near heat sources. Doing so may cause a failure.
Do not install in areas where noise is generated. Doing so may cause malfunction.	Do not install this product in a place where combustible gas may leak. Gas leaking and accumulating around the product may cause a fire.
Do not use this device in locations where children may be present.	

Usage Precautions

Do not drop the product or apply strong shock. Doing so may cause a failure.	If this product malfunctions, turn off the original power supply, and then contact the dealer from whom you purchased the product to ask for repair. Continued operation with an abnormality may cause fire or electric shock.
When cleaning and checking, turn off the earth leakage breaker. Failing to do so may cause injury.	

Precautions on Connection to External Devices

Do not connect the System Controller to the Internet. Never connect it. We shall assume no responsibility for any problems arising from the connection. Only a connection to the local area is possible.

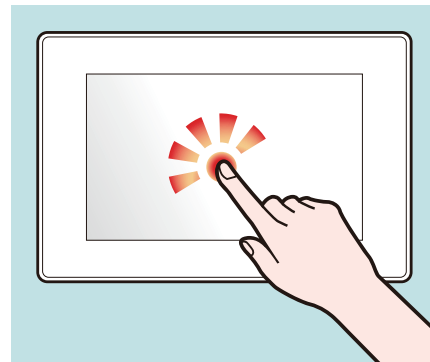
2 Operation Method

Touch Panel Operation Method

Explains the basic touch panel operation method.

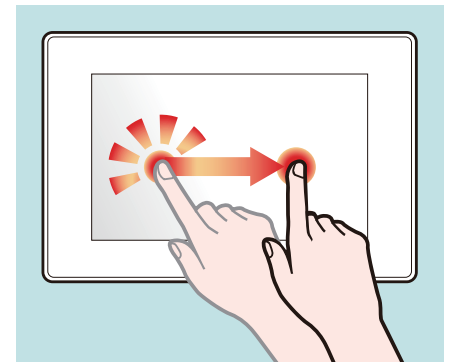
Tap

Touch your finger lightly on the screen and release it immediately.



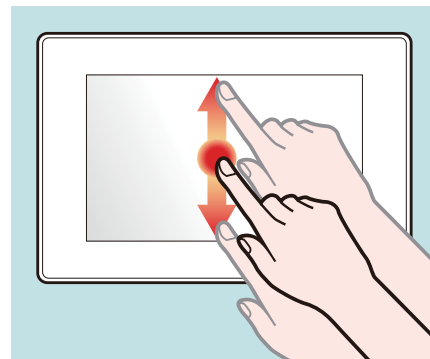
Drag

Tap an object on the screen, hold your finger down, and move.



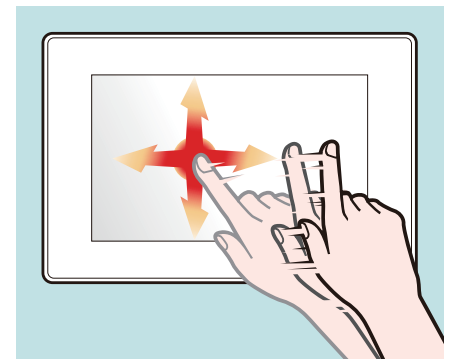
Swipe

Touch your finger lightly on the screen and move it in the desired direction.



Flick

Touch the screen with your finger and move your finger quickly up, down, to left or the right.

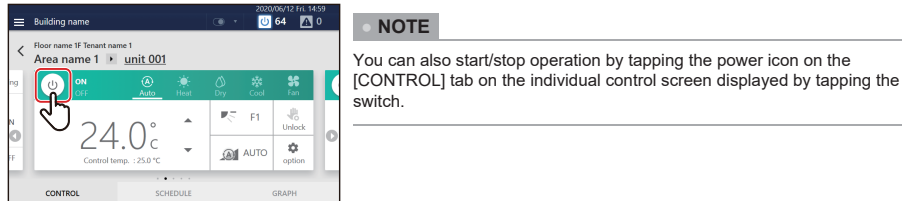
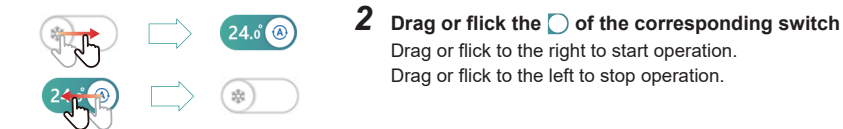
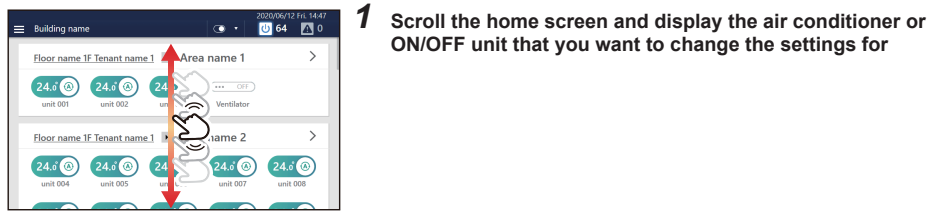


3 Basic Usage

This section explains how to configure the basic settings for starting and stopping operation and for air conditioning.

Start/Stop Operation

Operation method in units of air conditioner or ON/OFF unit

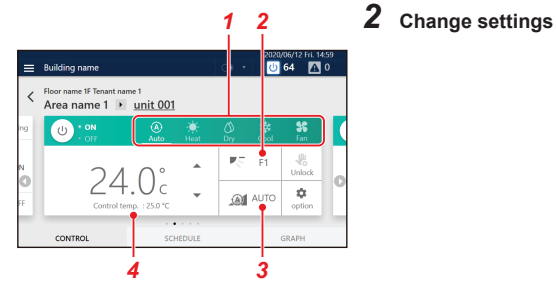
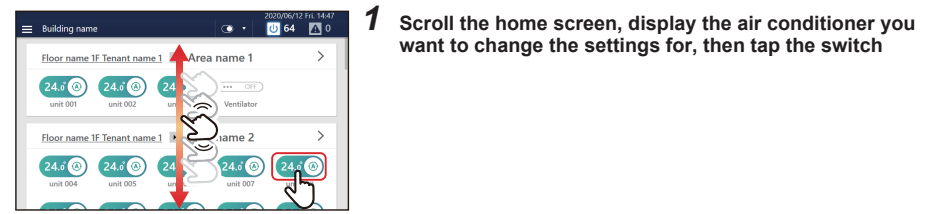


Change the Air Conditioning Settings

Air conditioner unit operation method

NOTE

To change the settings, it is necessary to set to the operation status. (P.4)



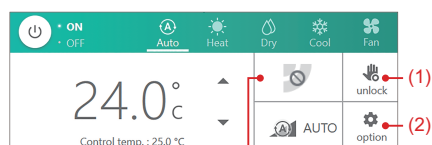
No.	Name	Functions						
1	Mode	Can be set to [Auto/Heat/Dry/Cool/Fan]. NOTE <ul style="list-style-type: none"> A bar is displayed at the bottom of the icon for the currently selected mode. Operation modes that cannot be set are not displayed. 						
2	Wind direction	Tap to switch to the following. <table border="1"> <thead> <tr> <th>Operation Mode</th> <th>Setting Range</th> </tr> </thead> <tbody> <tr> <td>Auto (Cool)/Cool/Dry</td> <td>Swing ON→Swing OFF→F1→F2→F3→Swing ON (Return to the beginning)</td> </tr> <tr> <td>Auto (Heat)/Heat/Fan</td> <td>Swing ON→Swing OFF→F1→F2→F3→F4→F5→Swing ON (Return to the beginning)</td> </tr> </tbody> </table> NOTE Depending on the connected model, it may not be configurable.	Operation Mode	Setting Range	Auto (Cool)/Cool/Dry	Swing ON→Swing OFF→F1→F2→F3→Swing ON (Return to the beginning)	Auto (Heat)/Heat/Fan	Swing ON→Swing OFF→F1→F2→F3→F4→F5→Swing ON (Return to the beginning)
Operation Mode	Setting Range							
Auto (Cool)/Cool/Dry	Swing ON→Swing OFF→F1→F2→F3→Swing ON (Return to the beginning)							
Auto (Heat)/Heat/Fan	Swing ON→Swing OFF→F1→F2→F3→F4→F5→Swing ON (Return to the beginning)							

No.	Name	Functions
3	Fan Speed	Tap to switch to the following. NOTE Depending on the connected model, it may not be configurable.
4	Set temp.	Tap ▲ ▼ to change the set temperature. NOTE <ul style="list-style-type: none"> If the operation mode is FAN, the temperature cannot be set. "Control temp." shows the indoor temperature detected by the indoor unit after partial compensation. *Depending on conditions such as the installation site of the indoor unit, it may differ from actual room temperature. In frost protection, preparing for operation, preparing for heating operation, etc., an icon and a text are displayed in this area.

NOTE

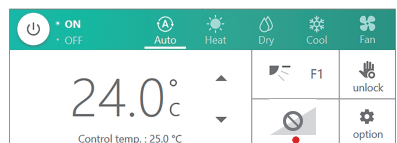
- For information on the setting of [(1) Lock setting of remote control], refer to "Local Remote Controller Lock" in "7 Various Functions" of the Owner's Manual.
- For information on the setting of [(2) Option], refer to "Set Operation Details" in "7 Various Functions" of the Owner's Manual.
- If there is no corresponding function, that item is not displayed.

Example of a model without a flap



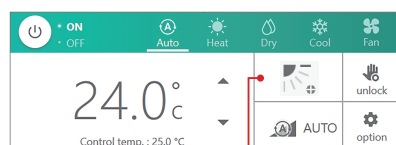
Since you cannot set the air direction, it does not change even if you tap it.

Example of a model where only a certain fan speed can be set



Since you cannot change the fan speed, it does not change even if you tap it.

Example of a case in which the wind direction cannot be changed



Because the flap is locked, you cannot change the wind direction even if you tap it.

4 Warranty and After-Sales Service

About the Warranty

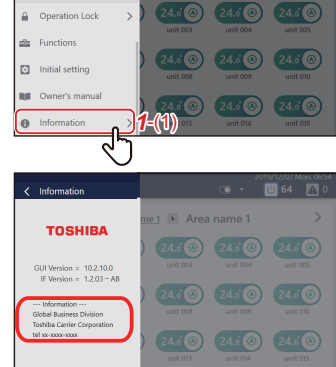
- The warranty period is one year from date of purchase.

About After-Sales Service

- Before requesting a repair, please check "11 Troubleshooting" of the Owner's Manual. If this does not solve the problem, immediately shut off the power supply and contact us.
- Please inform us of the following when requesting a repair.
 - Customer name
 - Address, phone number
 - Product model name and serial number
 - Installation date
 - Failure status (as much detail as possible)

Contact for after-sales service

For after-sales service, please contact here.



Customer Memo

Model Name	BMS-CT2560U-E / BMS-CT2560U-TR		
Installation Date	Year	Month	Day
Name of dealer from whom you purchased the unit	Phone number		

It is convenient to fill this in at the time of purchase in case you need to request repair, etc.